

## Differential Pressure Gauge Double bourdon tube type Model: DP5

### Applications

- For gaseous and liquid aggressive media that are not highly viscous or crystallising, also in aggressive ambience
- Process industry: Chemical/petro chemical, power stations, food and beverage, offshore oil rigs, pulp and paper, environmental technology, machine building and general plant construction

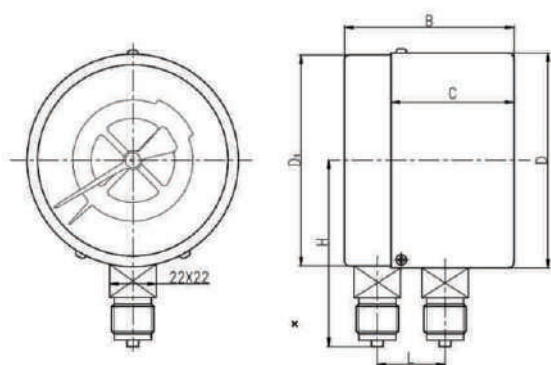


### Special features

The Instrument has 2 independent measuring systems .The measured pressure deflects the elastic elements ,displacements then take place to actuate gear mechanisms through linkages to carry 2 pointers traveling over instrument dial ,an auxiliary dial shows the pressure difference .

### Description

- |                           |   |
|---------------------------|---|
| ■ Accuracy class          | NS 100, 160: 1.6,1% (option)  |
| ■ Pressure element        | Stainless steel 316L<br>Hastelloy, Monel, Tantalum(option)  |
| ■ Process connection      | Stainless steel 316L bottom<br>NS 100, 160: ½ NPT, BSP (option)                                   |
| ■ Socket & connection     | 316L st. steel, option treated to comply with NACE MR0175&<br>MR 0103 standards                   |
| ■ Window                  | Laminated safety glass Anti-glare & Anti-static   |
| ■ Permissible temperature | Ambient: -20 ... +60 °C<br>Medium: +100 °C  |
| ■ Movement                | Stainless steel   |
| ■ Pointer                 | Aluminium, black graduation on white background   |
| ■ Dial                    | Aluminium, white, black lettering,  |
| ■ Protection              | IP45  |
| ■ Range                   | -1...0 to 0...100 bar<br>Vacuum & compound ranges<br>are available. single or double scale dials. |
| ■ Static pressure         | Safe upto 100 bar not depending on scale range  |
| ■ Case Gasket             | Neoprene ruber  |
| ■ Joint                   | Tig Argon Ark welding   |



NS	D	D1	B	C	H	L
100mm	101.00	99.00	80.00	58.00	87.50	32.00
160mm	159.00	157.00	82.00	76.00	146.00	32.00

## DP5 Differential Pressure Gauge

ORDERING CODE	Example:	DP5	4	T	2	L	S	AT	WA	Note
<b>Dial Size</b>										
4 - 100mm(4")			4							
6 - 160mm(6")										
<b>Process Connection Type</b>										
T - Bottom				T						
<b>Process Connection Sizes</b>										
2 - ½ NPT Male NS100,160 Dial					2					
4 - G ½ Male NS100,160 Dial										
6 - Customer										
<b>Case Design</b>										
D - Dry						D				
<b>Tube and Process Connection Material</b>										
S - 316L Stainless steel							S			
M - Monel® 400										
H - Hastelloy										
C - Customer										
<b>Accuracy</b>										
AT - 1.6% (std.)								AT		
AC - 1%										
<b>Options</b>										
SC - Single scale										
DS - Dual scales										
YW - 316L Stainless steel case										
SH - Red set hand, stationary (dry case only)										
BF - Back flange for wall mounting										
MF - Front flange for panel mounting										
CC - Calibration certificate										
NH - Stainless steel tag wired to case										
AT - ATEX										
WA - One year warranty									WA	
Other										



Address: 7191 Yonge street, Toronto, Canada

Tel: +16472221281(5 line)

Web: [www.madecotech.com](http://www.madecotech.com)

Email: [Info@madecotech.com](mailto:Info@madecotech.com)