

Flush Type Pressure Transmitter Model MDS7

Applications

- For gases, compressed air, vapour, liquids, pastes and powdery media
- Hydraulic aggregates
- Hydrostatic level measurement:
- Vacuum pressure monitoring, e.g. vacuum conveyors, pump monitoring
- Food and beverage manufacturing, pharmaceutical industry, biotechnology, sanitary applications

Special features

- Wide variety of aseptic process connections, for process temperatures up to 150 °C
- Flush process connection
- Fully welded
- Large stocks for short delivery times
- Ingress protection up to IP 65
- Adjustability of zero point and span

Description

Specialist for viscous and solids-containing media

The model MDS7 pressure transmitter with flush diaphragm has been specifically designed for the measurement of viscous, paste-like, adhesive, crystallising, particle-laden and contaminated media, which would clog the pressure channel of conventional process connections.

Through its optimised design, the flush process connection enables the cleanability of the wetted diaphragm to be integrated into the process. Low-maintenance and trouble-free pressure measurement is thus also guaranteed in critical applications with frequently changing media.

High accuracy, a robust design, high-quality workmanship and the high flexibility of configuration are key features of the model MDS7



Flush process connection

All process connections of the flush pressure transmitter are made of stainless steel, all welded and isolate the process medium from the pressure measuring instrument via a positive seal. A reliable, dead-space free sealing between the process connection and the measuring medium is thus assured.

For high medium temperatures of up to 302 °F (150 °C), the pressure transmitter is also available with an integrated cooling element.

Specification

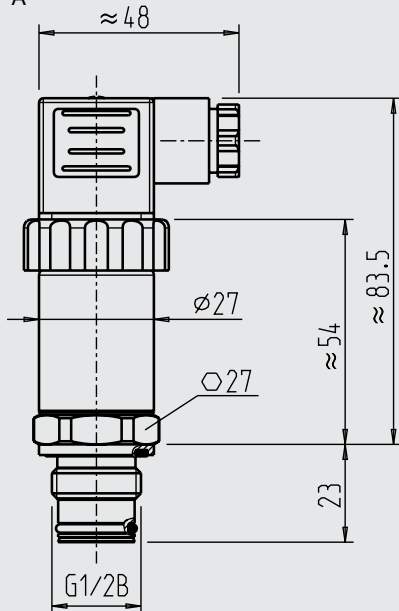
■ Measurement Range	0 ... 100mbar~600 BAR
■ Proof pressure	≤1.5X rated pressure
■ Pressure type	Gauge, absolute ,sealed gauge
■ Accuracy	±0.5% (typical) ±0.25% (option)
■ Long stability	±0.1%F.S/year (typical) ±0.2%F.S/year (Max)
■ Temperature Error Zero	±0.03%F.S/ (≤100KPa) ±0.02%F.S/°C (>100KPa)
■ Temperature Error Span	±0.03%F.S/ (≤100KPa) ±0.02%F.S/°C (>100KPa)
■ Operating Temperature Range	-20 ...150°C with cooling element-without cooling element -10 ... 80°C
■ Storage Temperature Range	40 ...120°C
■ Power supply	12 ...30VDC
■ Output signal	4 ... 20mA 0 ... 5 0.5 ... 4.5VDC 0 ... VDC
■ Process connection	Flush 1/2" & 1"
■ Housing material	stainless steel 1.4571
■ Diaphragm material	Fully welded 316L



Dimensions in mm (inch)

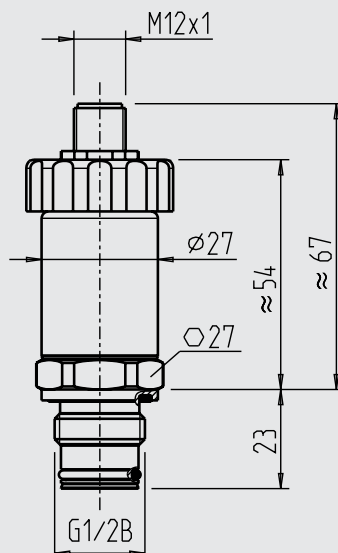
Pressure transmitter

with angular connector DIN 175301-803 A



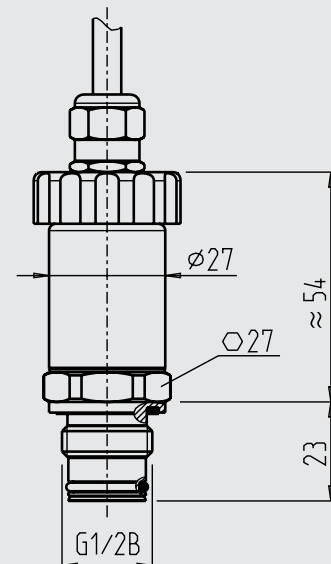
Weight approx. 0.2 kg / 7 oz

with M12 x 1 circular connector



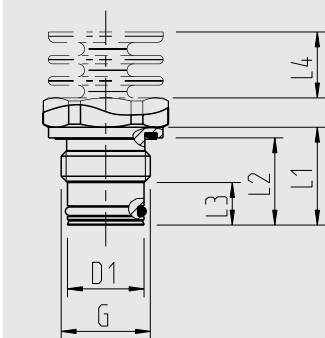
Weight approx. 0.2 kg / 7 oz

with cable outlet

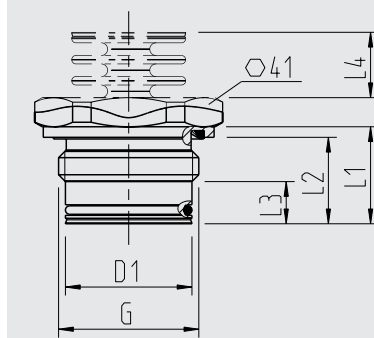


Weight approx. 0.2 kg / 7 oz

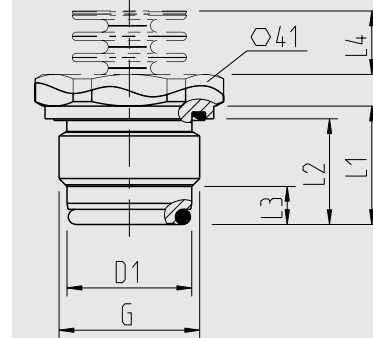
Process connections



G	D1	L1	L2	L3	L4
G ½ B	18 (0.71)	23 (0.91)	20.5 (0.81)	10 (0.4)	15.5 (0.61)



G	D1	L1	L2	L3	L4
G 1 B	30 (1.19)	23 (0.91)	20.5 (0.81)	10 (0.4)	15.5 (0.61)



G	D1	L1	L2	L3	L4
G 1 B hygienic	29.5 (1.17)	28 (1.11)	25 (0.99)	9 (0.36)	15.5 (0.61)

MDS7X Flush Type Pressure Transmitter

ORDERING CODE	Example:	MDS7X	4	250	P	D1	S1	J1	S	S	NOTE
Dimension											
4 - Circular connector M12*1 - 4pin			4								
5 - Cable with 1.5 m											
6 - Mini DIN											
7 - Big Din											
8 - Customer											
Pressure Range											
(0 - xxx)mbar or bar				250							
Pressure Unit											
B - Bar											
P - Psi					P						
M - mbar											
C - Customer											
Power Supply											
D1 - 24VDC						D1					
D2 - 5VDC											
C - Customer											
Output Signal											
S1 - 4 ... 20 mA DC							S1				
S2 - 1 ... 5 VDC											
S3 - 0 ... 5 VDC											
S4 - 0 ... 10 mA DC											
S5 - 0 ... 20 mA DC											
S6 - 0 ... 10 VDC											
S7 - 0.5 ... 4.5 VDC											
C - Customer											
Pressure port											
J1 - 1/2"								J1			
J2 - 1"											
J3 - Others											
Diaphragm material											
S - 316L Stainless steel											
M - Monel® 400											
H - Hastelloy											
T - Tantalum											
G - Gold plated									G		
C - Customer											
Pressure Type											
G - Gauge pressure											
A - Absolute pressure											
S - Sealed pressure										S	
C - Customer											
Other											



Address: 7191 Yonge street, Toronto, Canada

Tel: +16472221281(5 line)

Web: www.madecotech.com

Email: Info@madecotech.com