

Black Epoxy coated with Externally Adjustable Dial Test Gauge Model: PT2

Applications

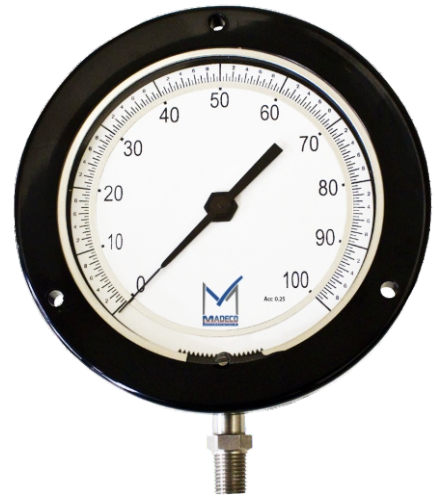
- Calibration Labs
- Test benches
- Test and measurement & Validation
- Testing of industrial type pressure
- For gaseous and liquid aggressive media that are not highly viscous or crystallising, also in aggressive ambience
- Process industry: Chemical/petro chemical, power stations, food and beverage, offshore oil rigs, pulp and paper, environmental technology, machine building and general plant construction

Special features

- Externally adjustable dial
- Micro span adjustment
- Stabilizer movement
- Anti-glare & Anti-static window
- Knife edge pointer for optimal accuracy of reading
- All stainless steel construction
- Design EN 837-1
- Scale ranges up to 0 ... 1,600 bar

Description

- | | |
|---------------------------|---|
| ■ Accuracy class | NS 100, 160,250: 0.25, 0.5, 0.1% (option) |
| ■ Pressure element | Stainless steel 316L C-type or helical type
Hastelloy, Monel, Tantalum(option) |
| ■ Process connection | Stainless steel 316L back & bottom
NS 100, 160, 250: ½ NPT, BSP(option) |
| ■ Socket & connection | 316L st. steel treated |
| ■ Window | Laminated safety glass Anti-glare & Anti-static |
| ■ Permissible temperature | Ambient: -40 ... +60 °C without liquid filling
-20 ... +60 °C gauges with glycerine filling ¹⁾
Medium: +200 °C maximum without liquid filling
+100 °C maximum with liquid filling |
| ■ Movement | Stainless steel with stabilizer |
| ■ Pointer | Micro - Adjustable with twisted type and counterweight |
| ■ Dial | Mirrored, single or dual scale |
| ■ Protection | IP66 |
| ■ Range | 0...10 to 0...30,000 psi;
0...60 to 0...200,000 kPa;
0...0.6 to 0...2,000 bar
Vacuum & compound ranges
are available. single or double scale dials. |



■ **Pressure limitation**

NS 63: Steady: 3/4 x full scale value
 Fluctuating: 2/3 x full scale value
 Short time: Full scale value
 NS 100, 160: Steady: Full scale value
 Fluctuating: 0.9 x full scale value
 Short time: 1.3 x full scale value

■ **Temperature error**

When the temperature of the measuring system deviates from the reference temperature (+20 °C):
 max. ±0.4 %/10 K of full scale value

PT2 Pressure Gauges

ORDERING CODE	Example:	PT2	6	T	2	D	S	AT	WA	Note
Dial Size										
4 - 100mm(4")										
6 - 160mm(6")			6							
10 - 250mm(10")										
Process Connection										
T - Bottom				T						
B - Back										
Process Connection Sizes										
2 - 1/2 NPT Male NS100,160, 250 Dial					2					
4 - 1/2 G Male NS100,160, 250 Dial										
6 - Customer										
Case Design										
D - Dry						D				
L - Liquid fill										
Tube and Process Connection										
S - 316L Stainless steel							S			
M - Monel® 400										
H - Hastelloy										
C - Customer										
Accuracy										
AT - 0.5% (std.)								AT		
AB - 0.25%										
AC - 0.1%										
Options										
SC - Single scale										
DS - Dual scales										
YW - 316L Stainless steel case										
OS - Overload stop										
GF - Glycerine filling										
BF - Back flange for wall mounting										
MF - Front flange for panel mounting										
CC - Calibration certificate										
NH - Stainless steel tag wired to case										
AT - ATEX										
WA - One year warranty									WA	
Other										



Address: 7191 Yonge street, Toronto, Canada

Tel: +16472221281(5 line)

Web: www.madecotech.com

Email: Info@madecotech.com